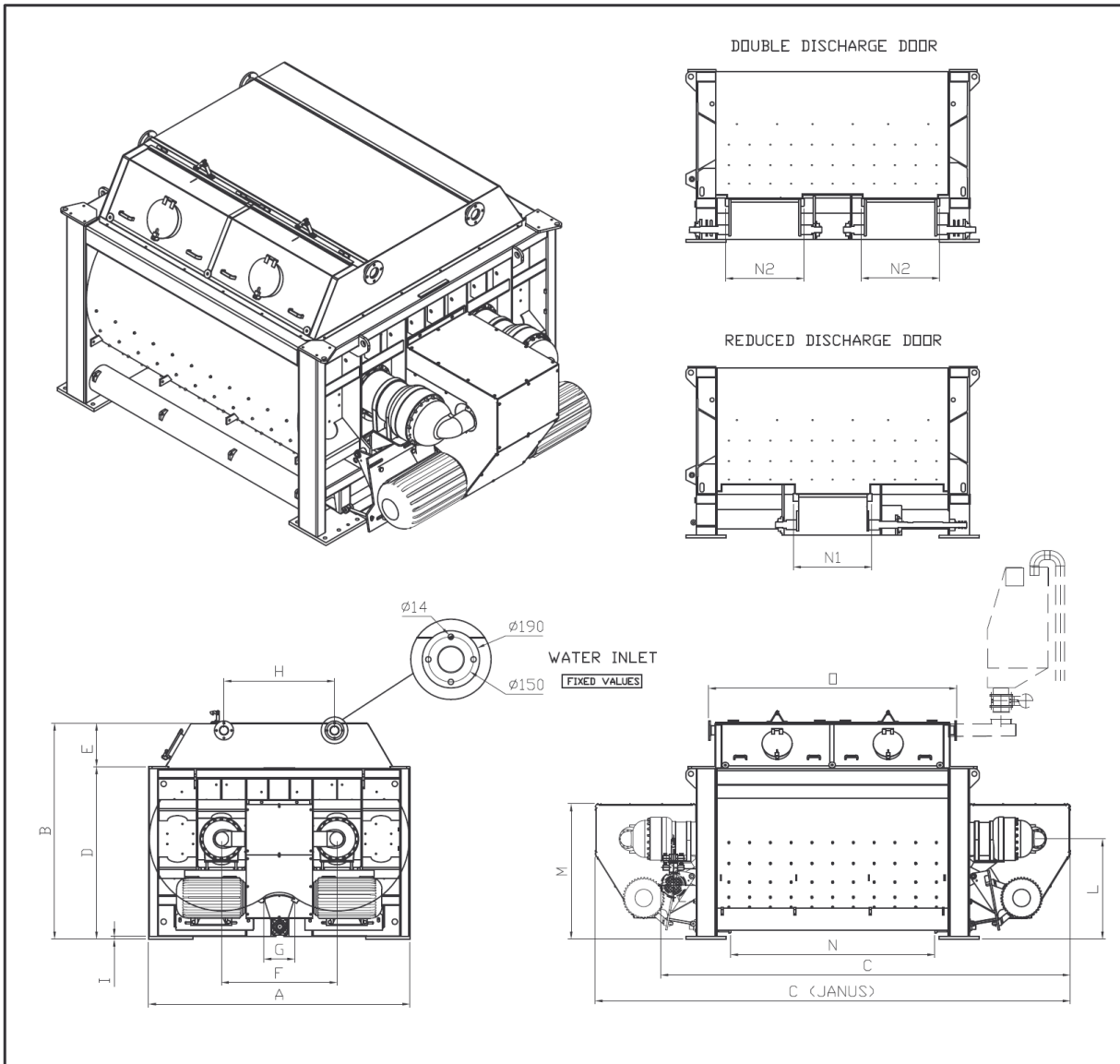


SICOMA TWIN SHAFT MIXERS

OVERALL DIMENSIONS



MODEL MAO		A	B	C	D	E	F	G	H	I	L	M	N	N1	N2	O
1500/1000	mm	2000	1870	2950	1480	390	900	240	730	20	910	1085	1290	740	740	1700
	inch	78,74	73,62	116,14	58,27	15,35	35,43	9,45	28,74	0,79	35,83	42,72	50,79	29,13	29,13	66,93
2250/1500	mm	2320	2132	3505	1700	460	1025	240	980	27	947	1290	1520	740	740	1900
	inch	91,34	83,94	137,99	66,93	18,11	40,35	9,45	38,58	1,06	37,28	50,79	59,84	29,13	29,13	74,80
3000/2000	mm	2320	2132	3505	1700	460	1025	240	980	27	947	1290	1520	740	630	1900
	inch	91,34	83,94	137,99	66,93	18,11	40,35	9,45	38,58	1,06	37,28	50,79	59,84	29,13	29,13	74,80
3750/2500	mm	2320	2132	3505	1700	460	1025	240	980	27	947	1290	1520	740	740	1900
	inch	91,34	83,94	137,99	66,93	18,11	40,35	9,45	38,58	1,06	37,28	50,79	59,84	29,13	29,13	74,80
4500/3000	mm	2600	2152	4070	1720	435	1150	240	1110	27	1000	1350	2080	740	740	2472
	inch	102,36	84,72	160,24	67,72	17,13	45,28	9,45	43,70	1,06	39,37	53,15	81,89	29,13	29,13	97,32
5000/3350	mm	2600	2152	4070	1720	435	1150	240	1110	27	1000	1350	2080	740	740	2472
	inch	102,36	84,72	160,24	67,72	17,13	45,28	9,45	43,70	1,06	39,37	53,15	81,89	29,13	29,13	97,32
6000/4000	mm	2600	2152	4500	1720	435	1150	240	1110	27	1000	1450	2530	740	740	2925
	inch	102,36	84,72	177,16	67,72	17,13	45,28	9,45	43,70	1,06	39,37	57,09	99,61	29,13	29,13	115,16
7500/5000	mm	2600	2152	4500	1170	435	1150	240	1110	27	1000	1450	2530	740	740	2925
	inch	102,36	84,72	177,16	46,06	17,13	45,28	9,45	43,70	1,06	39,37	57,09	99,61	29,13	29,13	115,16
9000/6000J	mm	2600	2260	5650	1990	270	1150	240	980	30	1010	1455	2960	740	740	3340
	inch	102,36	88,98	222,44	78,35	10,63	45,28	9,45	38,58	1,18	39,76	57,28	116,53	29,13	29,13	131,50
N12000/8000J O T	mm	2600	2260	6685	1990	270	1150	350	980	30	1010	1455	-	-	1000	3340
	inch	102,36	88,98	263,19	78,35	10,63	45,28	13,78	38,58	1,18	39,76	57,28	-	-	39,37	131,50

NOTES: 1 - J = JANUS, DOUBLE ENDED, 4 MOTORS. 2 - TECHNICAL DATA ARE SUBJECT TO CHANGE WITHOUT NOTICE AS SICOMA CONTINUES TO INNOVATE